

FOR LEASE

Retail/Office

1,992± SF | \$16.00/SF NNN



332 Forest Avenue, Portland

Property Highlights

- *Excellent location just off the peninsula*
- *On-site free parking*
- *Pylon signage available*
- *Adjacent to USM campus*

Property Description

We are pleased to offer a retail/office suite for lease at 332 Forest Avenue in Portland. University Plaza is highly visible, located at a lighted intersection and has excellent signage potential. The building is adjacent to The University of Southern Maine and Exit 6 of I-295. Other tenants include Distinctive Tile & Design, Kitchen Cove Cabinetry, Necessary Technologies and Eurofins.



Broker Contact

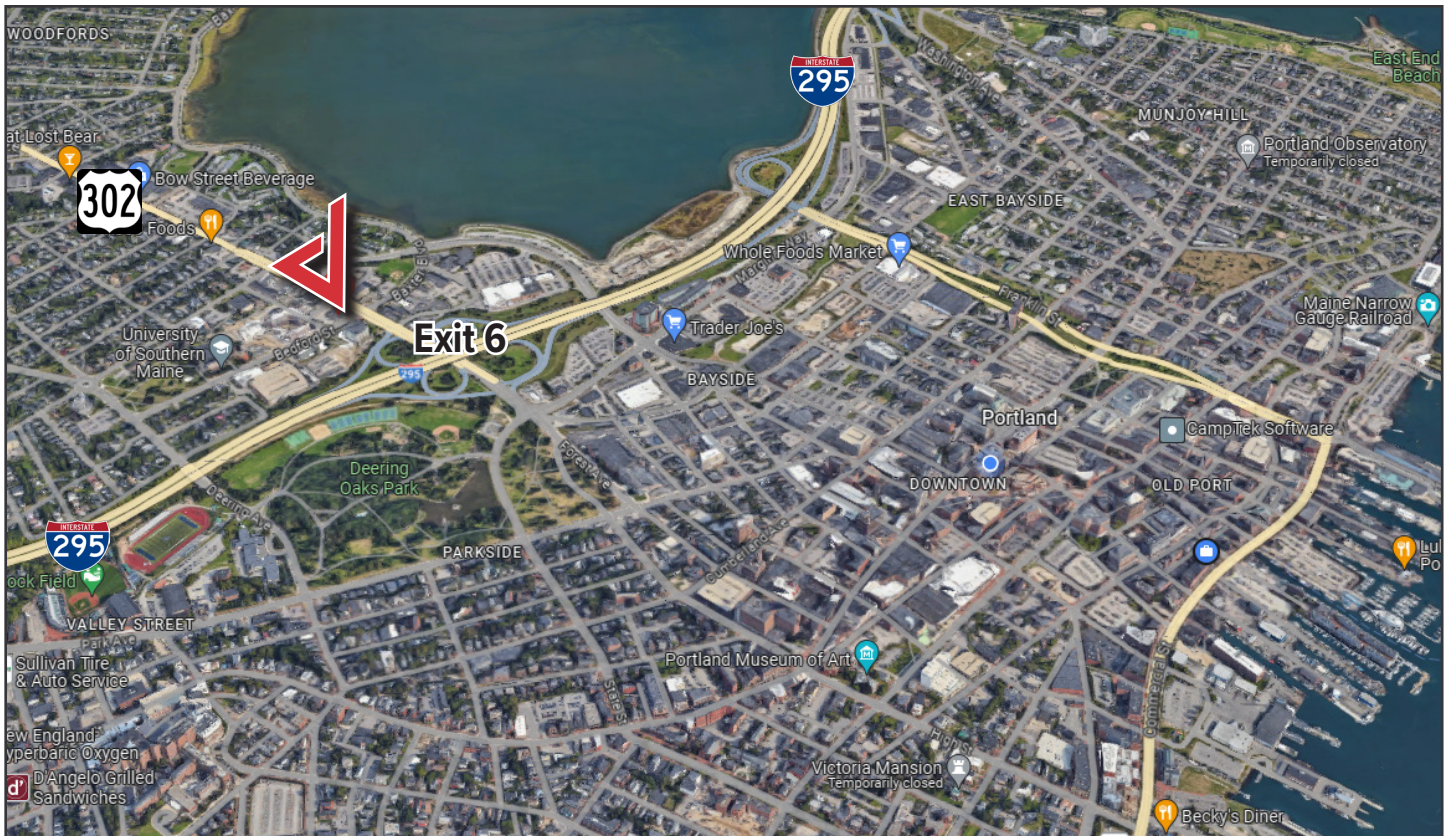
Katie Breggia | katie@dunhamgroup.com
207.773.7100 | www.dunhamgroup.com

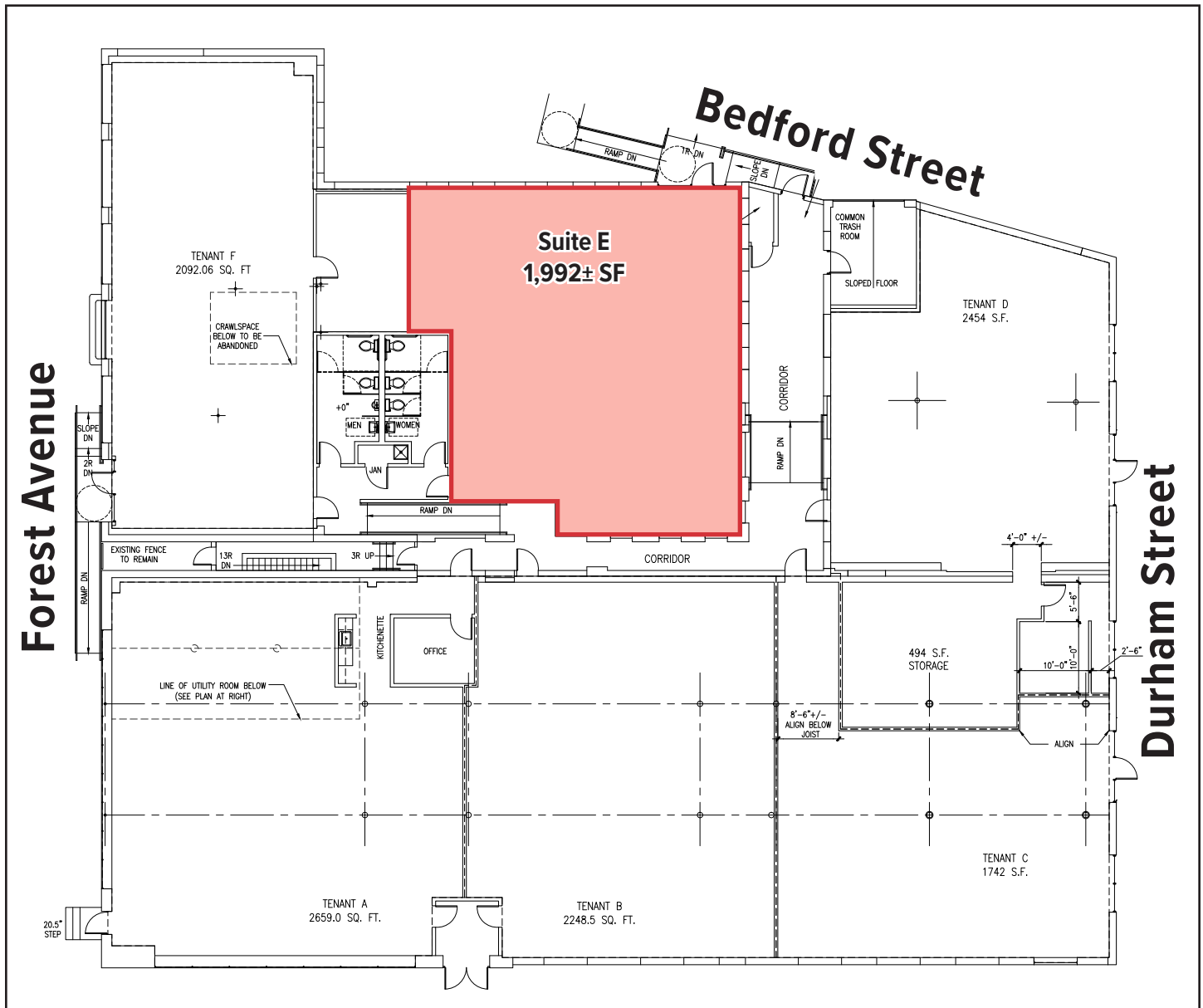


Property Overview

Owner	Oakhurst Properties, LLC
Building Size	14,724± SF
Available Space	Suite E: 1,992± SF
Zoning	Business Community (B2)
Year Built	1962
Construction	Brick/concrete block
Flooring	Commercial grade tile
Parking	Free, on-site
Road Frontage	Forest Avenue, Bedford Street and Durham Street
NNN's	\$4.89/SF

FOR LEASE : \$16.00/SF NNN





The information contained herein has been given to us by the owner of the property or other sources we deem reliable. We have no reason to doubt its accuracy, but we do not guarantee it. All information should be verified prior to purchase or lease.